

Capital Improvement Project Dashboard Guide

City of Hollywood | FL

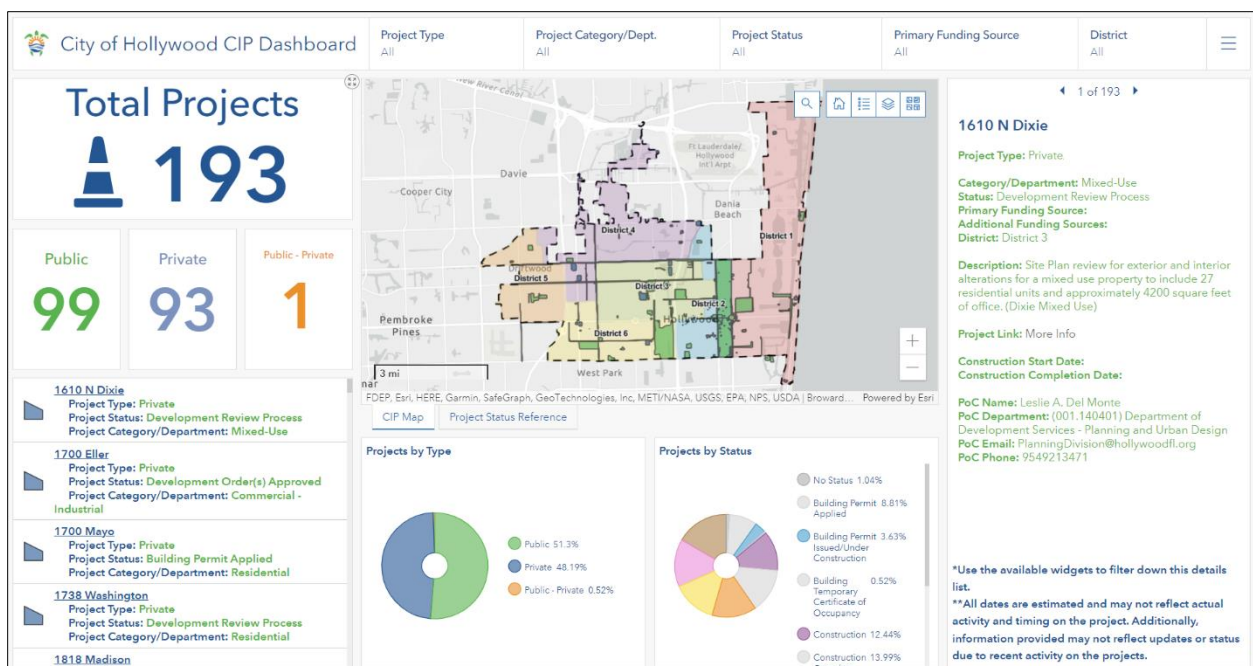
table of **CONTENTS**

City of Hollywood CIP Dashboard.....	1
Introduction to the City of Hollywood CIP Dashboard	1
CIP Selectors	2
CIP Indicators	3
CIP List.....	4
CIP Map	5
CIP Project Status Reference.....	6
CIP Pie Charts	7
CIP Details	8

City of Hollywood CIP Dashboard

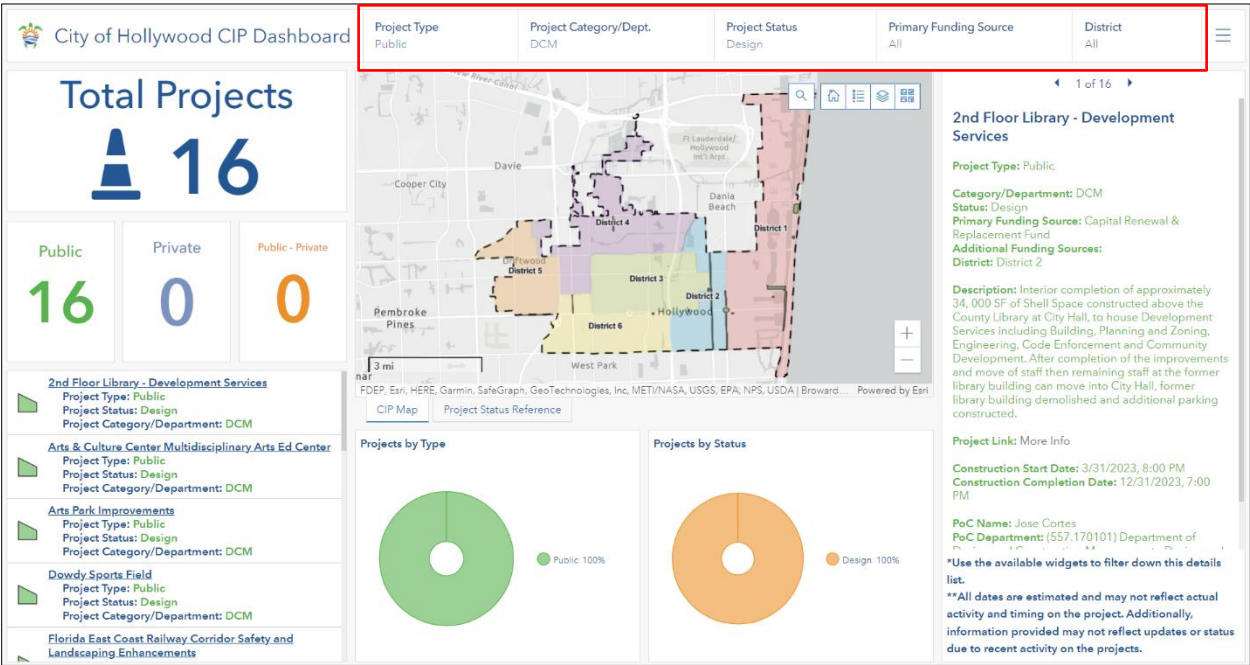
Introduction to the City of Hollywood CIP Dashboard

The City of Hollywood CIP Dashboard provides an interactive and dynamic environment for viewing capital improvements projects throughout the City. Multiple widgets available throughout the dashboard allow for filtering, selecting, and viewing details related to CIPs. Each available widget in the dashboard will be briefly discussed below. It is important to note that widgets in this dashboard are linked so that adjustments or selections made in one widget will be reflected throughout all other widgets where applicable.



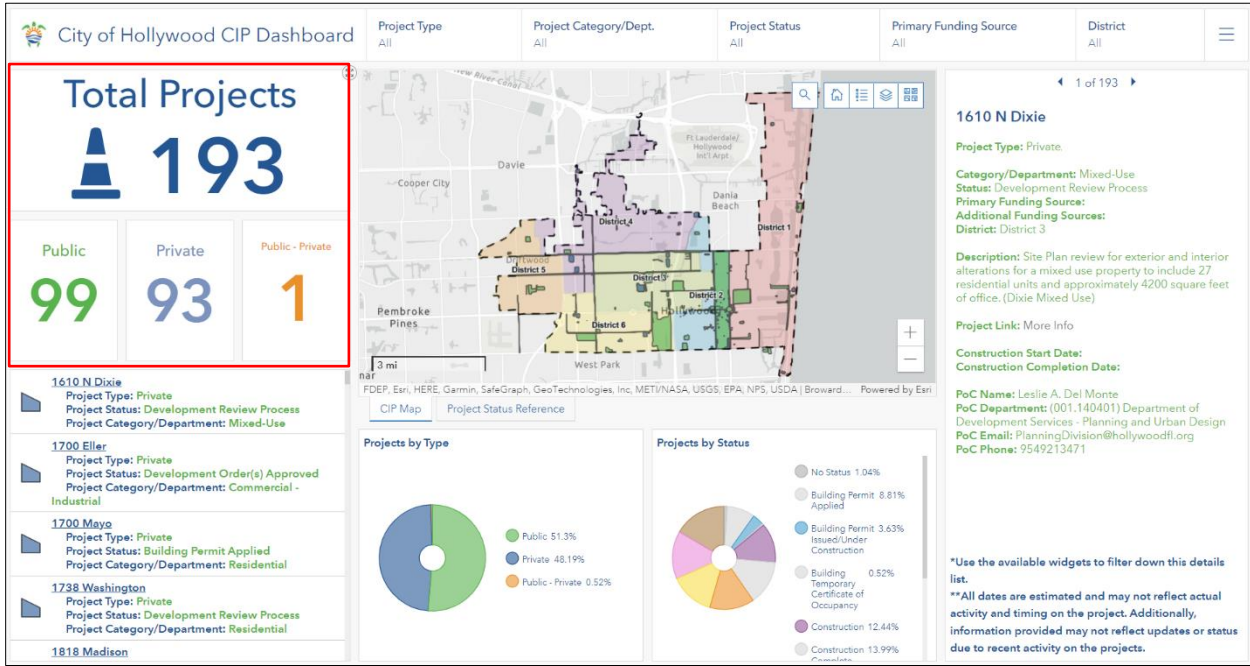
CIP Selectors

The header of the City of Hollywood CIP Dashboard contains numerous **selectors** that provide methods for filtering CIPs by certain themes. When interacting with a selector, a dropdown will appear that allows for the selection of a singular value within a particular theme (e.g., Project Type = Public). Once a selector has been enabled, all components of the dashboard will update based on the selector input. As a note, multiple selectors can be used in a compound manner to drill down to certain CIPs incorporating multiple themes.



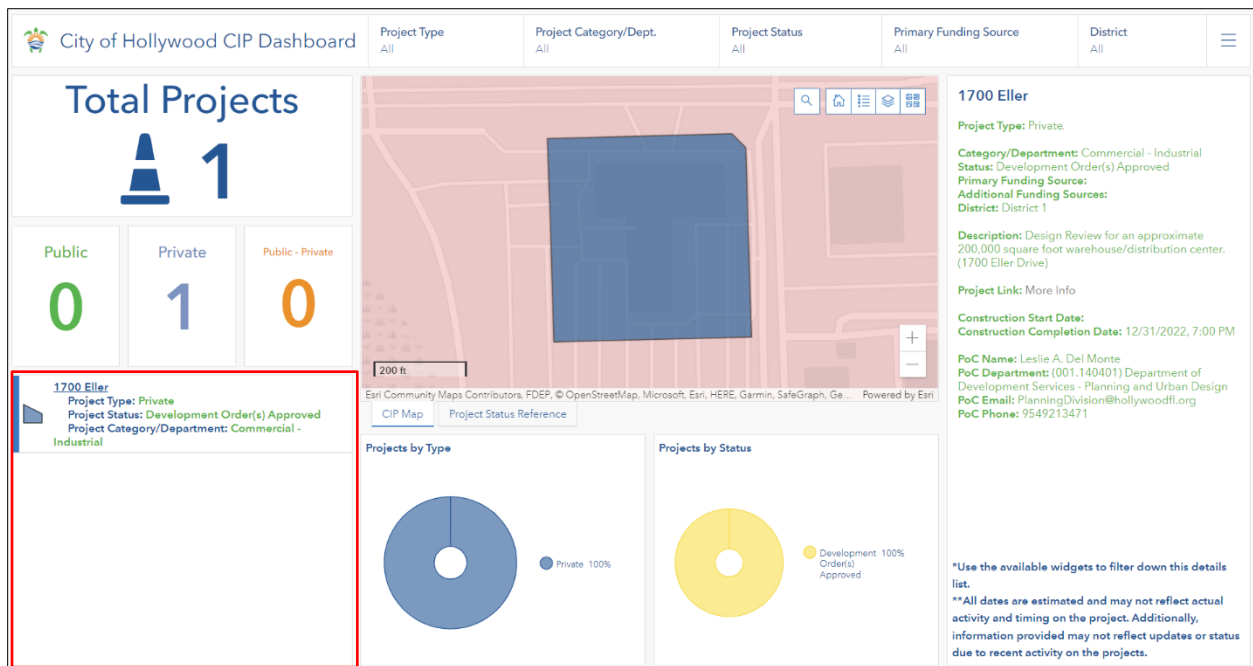
CIP Indicators

Four **indicators** can be found towards the top left of the City of Hollywood CIP Dashboard. The top indicator, and the largest indicator, gives the total count of all CIPs, or all CIPs matching the criteria selected from other widgets. The three indicators just below, Public, Private, and Public – Private, provide the total count of Public, Private, and Public – Private project types accordingly. These three indicators will also update dynamically based on input from other widgets in the dashboard.



CIP List

The **list** widget in the City of Hollywood CIP Dashboard could be considered the primary tool for selecting a single project and receive its associated information throughout other widgets. By default, and when the dashboard is first launched, the list widget will show the full list of all CIPs throughout the City in alphabetical order. As other widgets are interacted with, however, this list will be filtered accordingly. When a project is selected from the list, all other widgets (including the map and details widgets) will be filtered to show information pertaining to the selected project and the map will zoom into the project location. Additionally, multiple projects can be selected from the list simultaneously. Selected projects will have a vertical blue bar to the left of them in the list widget. To unselect a project from the list, simply click it a second time.

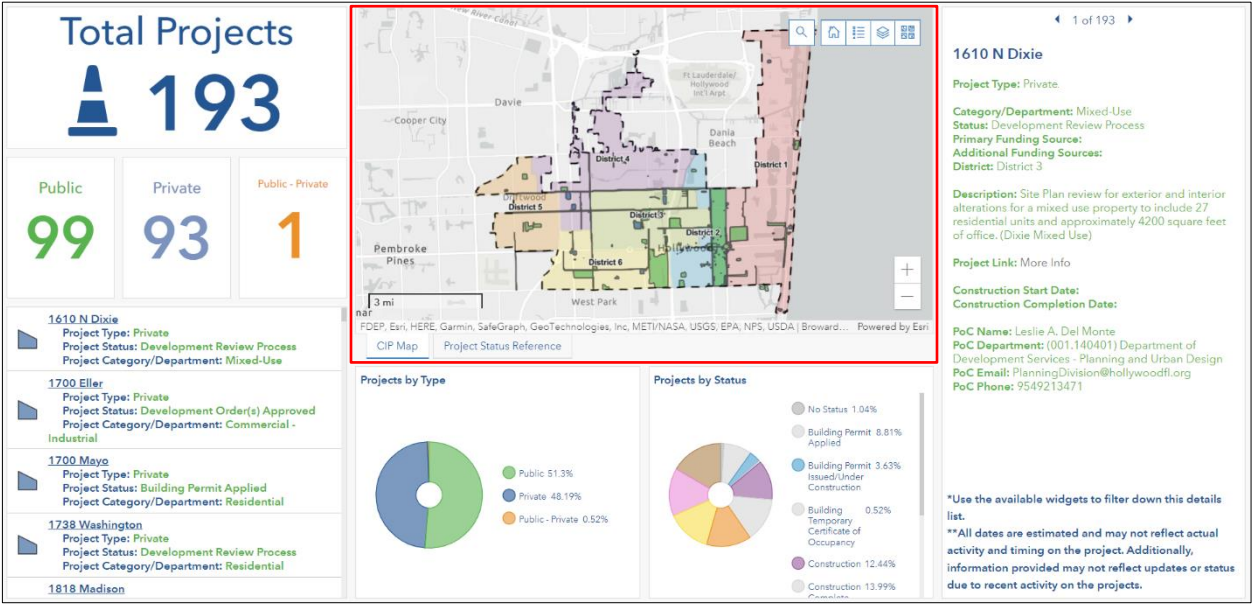


CIP Map

The City of Hollywood CIP Dashboard **map** provides an interactive window for viewing the geographic location of capital improvement projects, as well as a couple of additional layers available through the layer list. The mouse can be used within the map frame for navigation, zooming in/out, and panning. There are also several tools located just inside the map frame that provide additional functionality or means for map navigation. These tools are as follows:

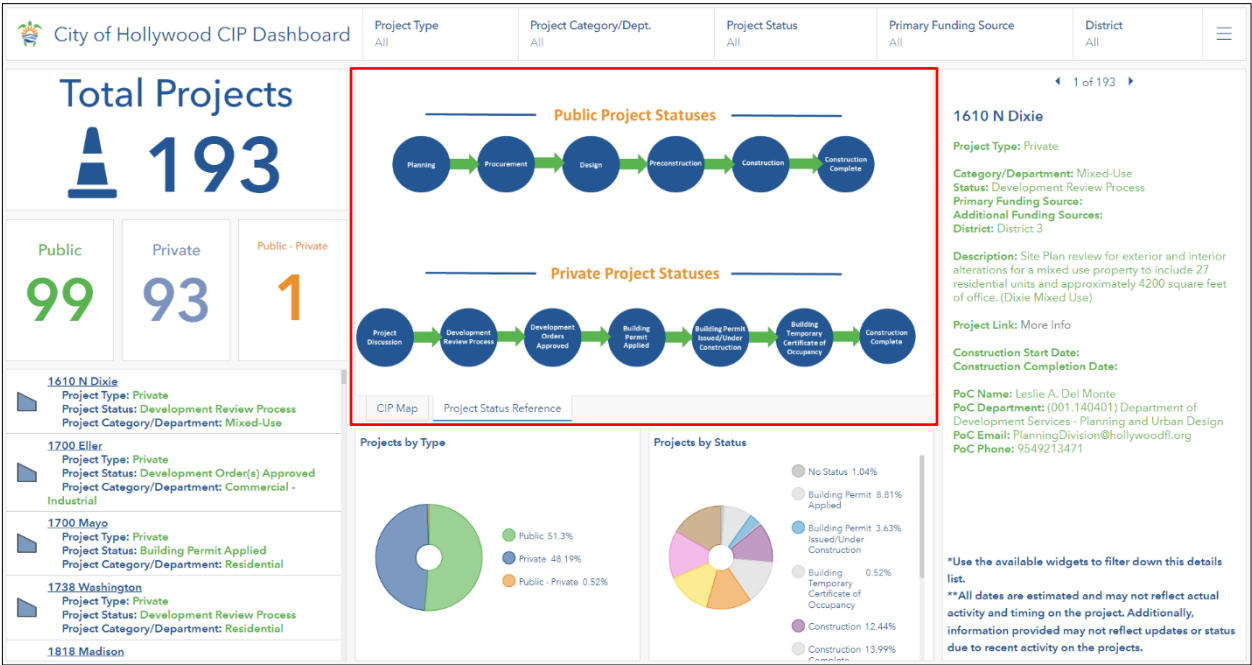
- Search (Magnifying Glass Icon) – Allows the user to input and search for a specific address or place
- Default Extent (House Icon) – Will navigate the map back to the default extent, or the extent that the map initially loads at
- Legend (Bulleted List Icon) – Provides a reference for the symbology of layers currently toggled on in the map
- Layer List (Stacked Squares Icon) – Includes all of the available layers for the map, and allows the user to toggle any of them on/off
- Basemap Gallery (Four Squares Icon) – Provides alternative basemaps that can be toggled
- Zoom In (Plus Icon) – Zooms in a preset amount
- Zoom Out (Minus Icon) – Zooms out a preset amount

It is important to note that the map extent will dynamically filter other widgets in the dashboard so that only projects visible in the map will be reflected.



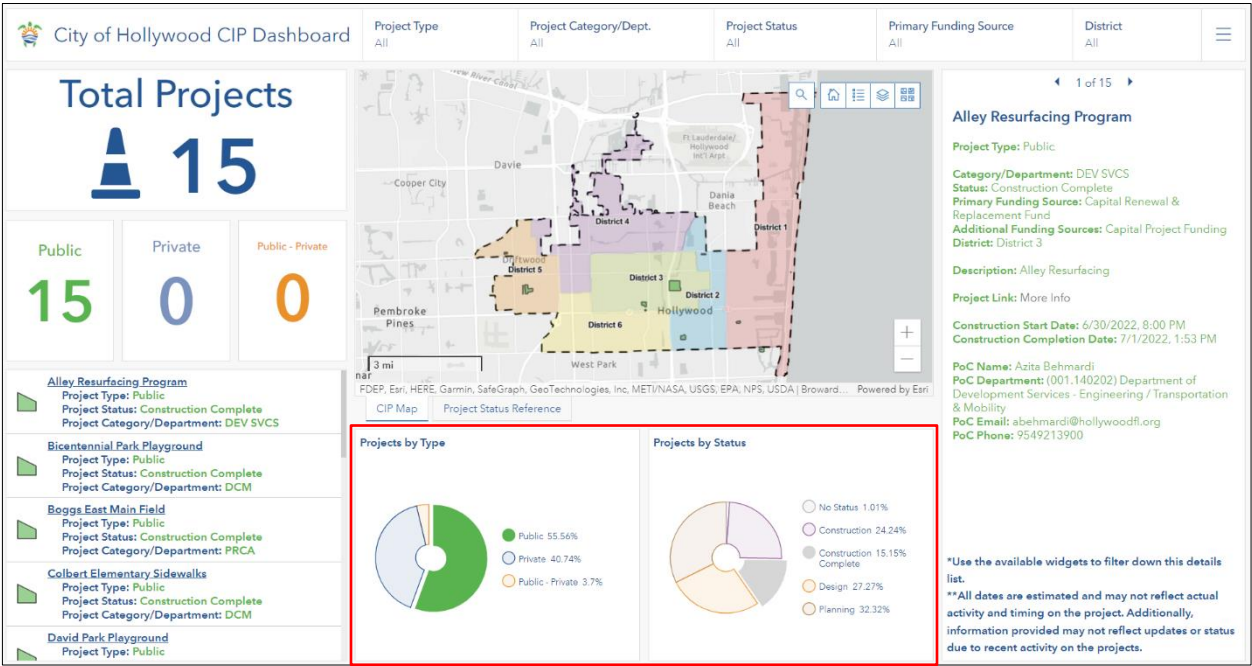
CIP Project Status Reference

Behind the map, and accessible through a tab just below the map, is the **project status reference**. This image is static and purely referential, but provides information related to project statuses and project life cycles. When finished with the reference image, the map can be toggled back by selecting the CIP Map tab just below the image.



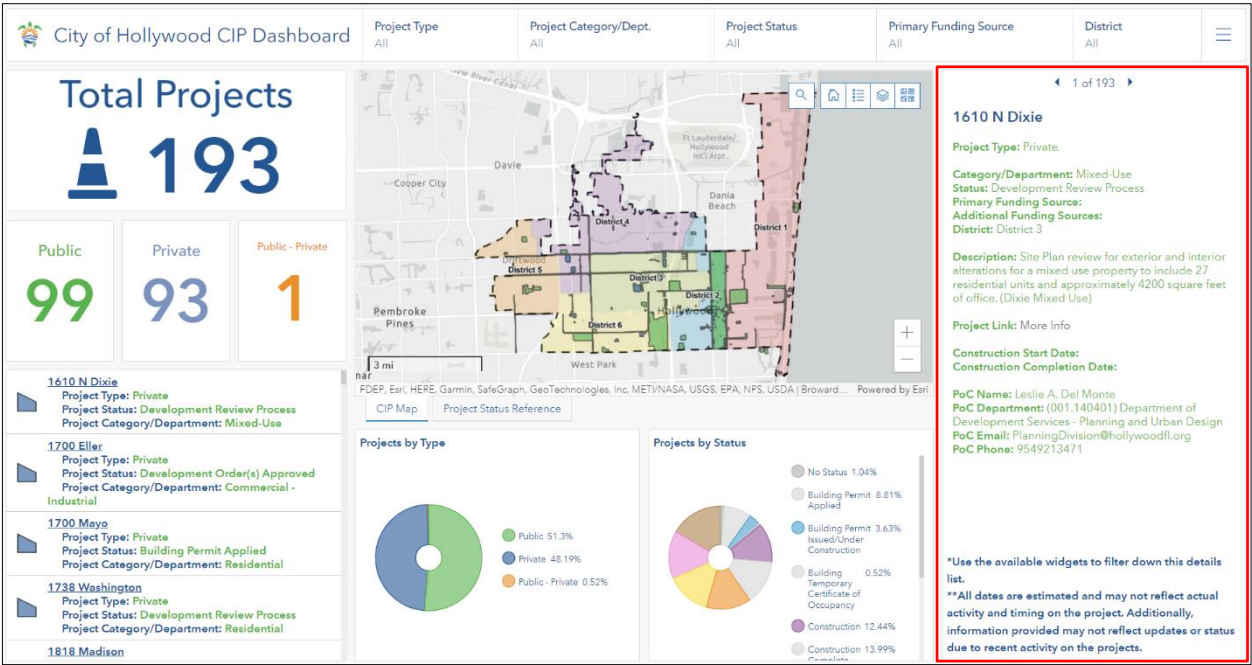
CIP Pie Charts

The **pie chart** widgets found near the bottom of the dashboard provide a view of the CIPs broken down by certain categories. Both pie charts will update as other widgets are interacted with, but the pie charts themselves are also interactive. Selecting a slice, or slices, of the pie, will filter out other components of the dashboard.



CIP Details

The **details** widget on the right side of the dashboard displays details for capital improvement projects. This widget only shows one project's details at a time, so it is best leveraged in association with filters available through other widgets. If more than one project matches the input criteria from other widgets, the left and right arrow at the top of the details pane will allow the user to cycle through projects meeting the input criteria. As a note, the details widget sorts projects alphabetically by project name.





**GEOGRAPHIC
TECHNOLOGIESGROUP**
Beyond Location Intelligence

Product of:
Geographic Technologies Group



919.759.9214



www.geotg.com